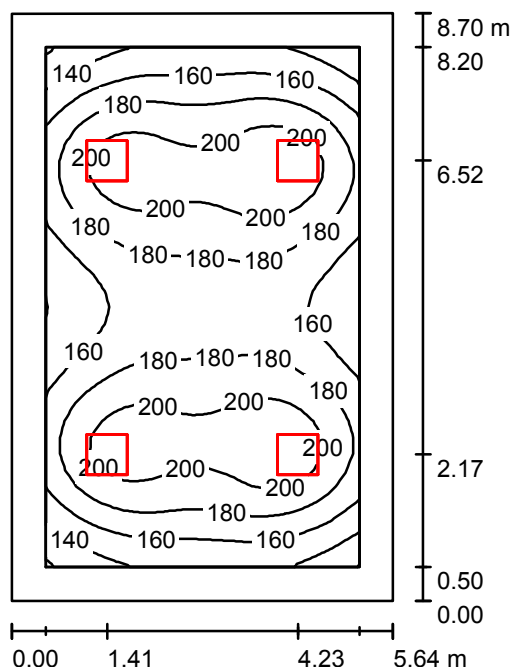


Operator
Telephone
Fax
e-Mail

Фойе 3.13 / Summary



Height of Room: 3.000 m, Mounting Height: 3.000 m, Maintenance factor: 0.90

Values in Lux, Scale 1:112

Surface	ρ [%]	E_{av} [lx]	E_{min} [lx]	E_{max} [lx]	u_0
Workplane	/	179	119	219	0.668
Floor	20	162	89	213	0.549
Ceiling	70	39	26	47	0.659
Walls (4)	50	92	32	185	/

Workplane:

Height: 0.100 m
Grid: 32 x 32 Points
Boundary Zone: 0.500 m

Illuminance Quotient (according to LG7): Walls / Working Plane: 0.515, Ceiling / Working Plane: 0.220.
Proportion of points with less than 400 lx (for IEQ-7): 100.00%.

Luminaire Parts List

No.	Pieces	Designation (Correction Factor)	Φ (Luminaire) [lm]	Φ (Lamps) [lm]	P [W]
1	4	OCTA-LIGHT PLC OCTL-OLS-30-RNWR (1.000)	3040	3100	28.0
Total:			12160	12400	112.0

Specific connected load: $2.28 \text{ W/m}^2 = 1.28 \text{ W/m}^2/100 \text{ lx}$ (Ground area: 49.07 m^2)